

**PUBLIC SUMMARY OF TREE PLANTATION OPERATIONS
TOWARDS FOREST STEWARDSHIP COUNCIL® FSC® CERTIFICATION
Year February, 2026**

Organization : Sabah Softwoods Berhad (SSB)
Company No. : 197301003426 (16887-D)
Contact Person : Mohd Hafizzul Bin Samutu
Phone No. : 019-806 7017
Email : hafizzul.samutu@softwoods.com.my
Address : P.O.Box 60966, 91019 Tawau
Fax No. : 089 - 754225
Office No. : 089 - 771333 and 089-766919
Approved By : Datuk Haji Mohd. Daud Bin Tampokong
Chief Executive Officer

INTRODUCTION

Sabah Softwoods Berhad (SSB), formerly Sabah Softwoods Sdn. Bhd. (SSSB), was incorporated in **1973** and is 70% owned by Innoprise Corporation Sdn.Bhd.

LOCATION AND AREA

The company's land bank covers **60,618 ha** and is located in Brumas Region (CL.105467687), which has a land area of 41,505 ha, and Kalabakan Region (CL. 105472508), which has a land area of 19,195 ha. Brumas Region is located between Latitude 4°24'N and 4°44'N and Longitude 117°38'15"E and 117°50'E, and Kalabakan Region is located between Latitude 4°23'45"N and 4°38'30"N and Longitude 117°23'45"E and 117°34'45"E.

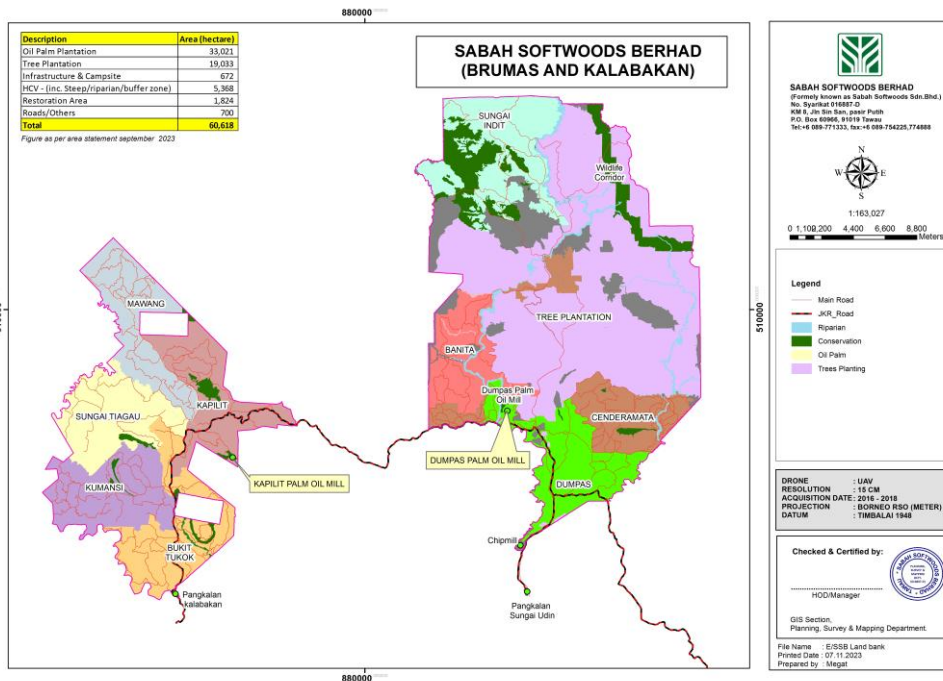
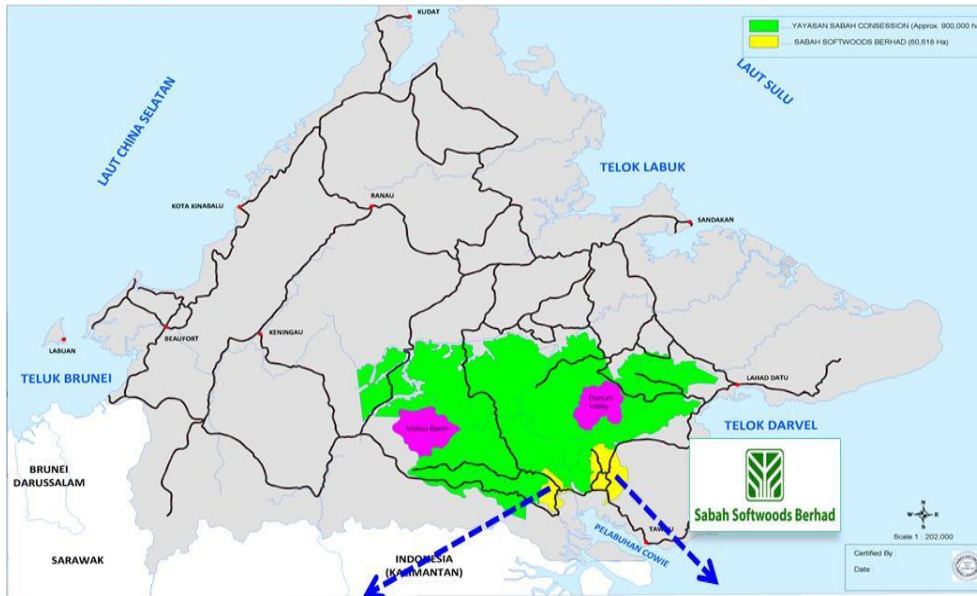
SSB is situated at the north-west region of ***Tawau District (Figure 1)***. The company is located about 1 hour's drive from Tawau along the Tawau - Kalabakan - Keningau trunk road.

CORE BUSINESS

Our core business is tree and Oil Palm plantations, along with a woodchip mill and crude palm oil mill. Tree plantations cover 18,734 ha, while oil palm plantations cover 32,782 ha. The remaining land bank areas cover 7,590 ha of conservation and 1,511 ha for housing, amenities, and infrastructure.

Our organization operates its business on the principles and philosophy of the 3Ps - People, Planet, and Profit. We see sustainable development as a balance between making economic

SSB LOCATION MAP



CERTIFICATION

Sabah Softwoods Berhad (SSB) Tree Plantation area is Forest Stewardship Council® (FSC®) certified. Tree plantation area received its first Well Managed Plantation Certification in 2007 and was recertified in 2012, 2017, and 2022. The current certificate SCS-FM/COC-00101P with license code FSC-C010070 is expiring on 30 November 2027. This year's surveillance audit is scheduled for April 2026. The FSC® certified area is 23,652.21 ha. Tree Plantation is committed to maintaining the certificate.

Chipmill operation obtained its first certification on 2011 (Certification SGSHK-COC-008500). FSC® Chain of Custody (COC) FSC-C104743 certification has been re-certified for the fourth time on 19th January 2026, (revised for FSC-STD-04-004 V3-1) COC on 14th January 2021) and is valid until 1st March 2031.

FSC® CERTIFIED TREE PLANTATION AREA STATEMENT AS AT FEBRUARY 2026

No.	Descriptions	Sur.Ha	%
1	Tree Plantation Area	18,483.33	78.1
2	Conservation Area	3,894.84	16.5
3	Commercial Forest Area	774.72	3.3
4	Campsite	250.44	1.1
5	Others (Road etc.)	263.88	1.1
FSC® Certified Area		23,652.21	100












COMMITMENT

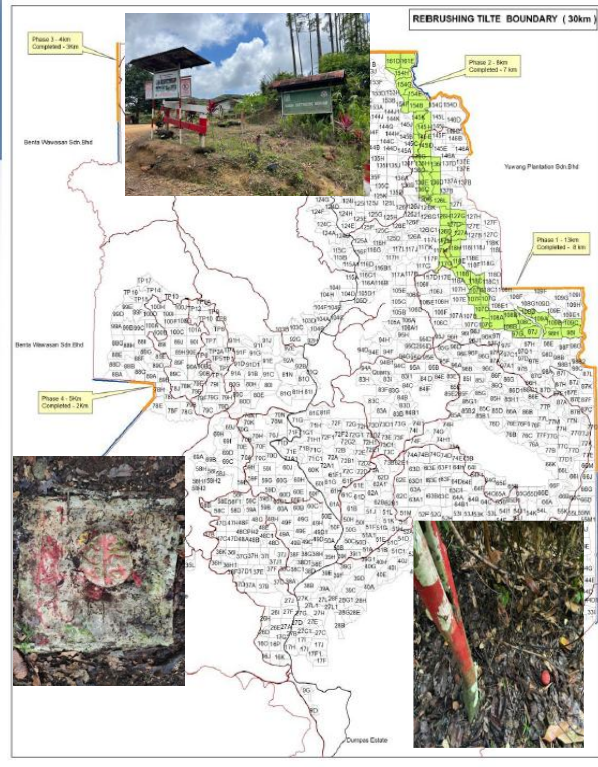
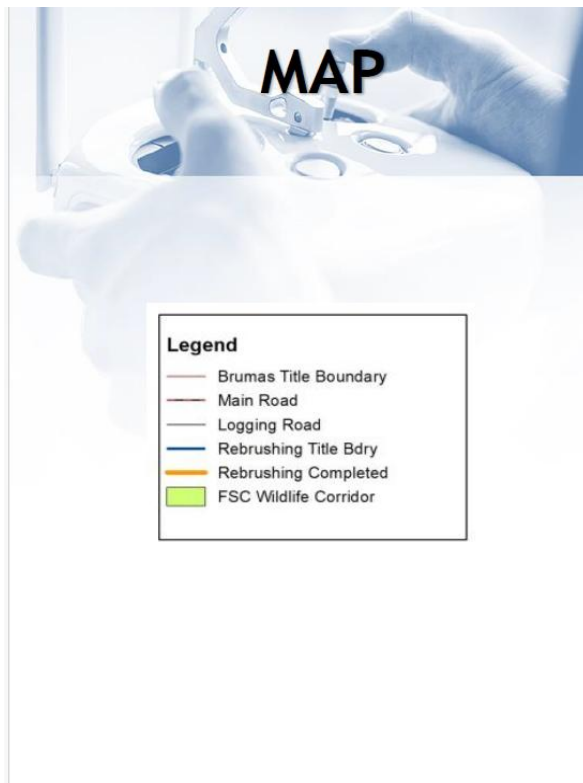
SSB has firmly committed to continual improvement in managing the fast-growing tree plantations in a sustainable manner that is environmentally sound, socially acceptable, and economically viable through the following principles and practices:

- Undertaking the Tree Plantation activities within the parameters of the titled land in conformity with the conditions in the land titles issued by the Land and Survey Department of the State of Sabah.
- Comply fully with all legislations, namely the Sabah Forest Enactment 1968, Environmental Protection Enactment 2002, the Wildlife Ordinance and Wildlife Conservation Enactment 1997, the Sabah Labour Ordinance, the Employment Act, and all relevant Health and Safety Regulations.
- To ensure that the objectives of the Tree Plantation are continued on a long-term basis, the Management of Sabah Softwoods Berhad is committed to maintaining 18,468.33 hectares of the total plantation area under Tree plantation.
- The management is committed and will continuously strive to maintain the standards set in all 10 FSC® principles.
- Undertake systematic and regular reviews of performance through management of corrective actions and Internal Audit.
- Clearly define and communicate environmental/sustainable forest management responsibilities to our employees and support them with training and appropriate resources to ensure those responsibilities are fulfilled.
- Provide job opportunities for the surrounding local communities.

- Avoid any adverse impacts to the property, resources, and/or livelihoods of the local community, by means of protecting and monitoring the river, protected forest, and Environment.

DEMARCATIION BOUNDARY

DESCRIPTION	BELIAN POSTS (COLOR)
A. AREA BOUNDARIES 1. Block Boundary (FSC Area) 2. Block Boundary Demarcation	   
B. CONSERVATION AREAS 1. Riparian 2. Water Catchment Area 3. Steep Areas 4. Wildlife Corridor Paths	 
C. TRIAL PLOTS	 
D. Title Boundary SSB Land Title Boundary	  



Tree Plantation

Tree Plantation operations are guided by the **10-Year Tree Plantation Management Plan (2026-2035)**. As part of a continuous improvement initiative, Management has revised several key operational parameters within the Tree Plantation Division (TPD) to enhance efficiency and establish a leaner organizational structure.

The streamlining process focuses on several critical areas:

- **Species Selection**

TPD will concentrate on cultivating specific high-yielding tree species that are most suitable for woodchip production. Based on comprehensive assessments of market demand, growth performance, and TPD's operational capacity, the selected species are *Eucalyptus pellita*, *Eucalyptus Hybrid*, and *Acacia Hybrid*.

- **Planting Configuration and Harvest Rotation**

The planting spacing for pulpwood is standardized at **3m × 2m**. In addition, the harvest rotation cycle has been shortened from **8 years to 5 years**, allowing for more efficient production turnover.

- **Harvesting Strategy**

The long-term harvesting plan has been restructured to better align with geographical conditions and the maturity levels of tree stands. Under this revised plan, plantation areas are grouped into clusters and harvested on a rotational basis according to their designated harvest year, as illustrated in the operational map.

- **Mechanization Initiative**

TPD is also planning to adopt a **semi-mechanized harvesting system** using a **grapple cutter**. This initiative aims to improve the productivity and efficiency of harvesting operations, while reducing reliance on manual labor and enhancing overall operational performance.

Map of Year of Harvest

The Altitude class distribution is categorized into three categories as shown above. The survey area is about 17,289.55 ha. About 62 % (10,793.18 ha) of the area is categorized within the range 600-1000 ft and is for *Albizia falcataria* (Af), *Acacia mangium* (Am), *Eucalyptus pellita* (Ep), *E. hybrid* (Eh), Teak, and Others. Approximately 12 % (2,009.44 ha) of the area has less than 600 ft mean above sea level which is reserved for the same planting.

LEGAL FRAMEWORK

All implementation activities stated in the Tree Plantation Management Plan (TPMP) are primarily governed and regulated following acts, enactments and regulations.

POLICY

Sabah Softwoods Bhd (SSB) has firmly committed to continual improvement in:

- a. Compliance with Statutory, Regulatory, and Certification requirements concerning biodiversity, environment, and sustainable forest management.
- b. List of Policy:

1	Forest Stewardship Council FSC® Policy Statement
2	Quality Policy
3	Occupational Health & Safety Policy
4	Environmental Policy
5	Anti-Bribery & Corruption Policy Statement
6	Gender Policy
7	Social Policy
8	Child Protection Policy
9	Freedom of Association Statement
10	Sexual Harassment Policy
11	Zero Burning Policy
12	Equal Employment Policy
13	Sexual Harassment & Gender Discrimination Policy
14	Prevention on Workplace Violence Policy
15	Human Right Policy

16	Minimum Age Policy
17	Pest Management Policy Statement
18	<i>Polisi Pemeliharaan Hidupan Liar</i>

PLANTATION ESTABLISHMENT AND MANAGEMENT

The activities include pre-replanting preparation (survey), land preparation for planting, field planting, planting materials, nursery, and upkeep & maintenance. These activities are stated in the TPMP. Chemicals are used to eradicate noxious weeds during land preparation. The selection of weedicide chemicals is based on the weed spectrum. SENTRY Glyphosate will no longer be used in plantation establishment and management for the year 2025. SHIELD Glyphosate will replace the chemical.

Type	Chemical	Dosage/Ha	Total (lit)	Ha.	Lit/ Ha	Weeds spectrum	Sprayer nozzle
BPS	SENTRY Glyphosate	6-7 liter (200 ml/pump)	3,797	1,477	2.6	Grasses, Sedges, & Broadleaves	LSA 4/1 Green nozzle
	SHIELD Glyphosate	6-7 liter (200 ml/pump)	5,902		4.0	Grasses, Sedges, & Broadleaves	
	ELLYTECH (500gram)	90 gm (3-5 gm/pump)	140,500		0.9	Ferns & Ipil-ipil	
	N-HANCE	90 gm (3-5 gm/pump)	83,000		0.1	Ferns & Ipil-ipil	

UPKEEP & MAINTENANCE

Upkeep and maintenance activities are carried out according to Standard Operating Procedure (SOP). After planting, spraying (APS) is carried out upto 18 months of planted trees. Before Planting Spraying Selective creeper cutting is carried out from 2 years after planting upto maturity. Starting in September 2022 only the Before Planting Spraying (BPS 1) is carried out for land preparation for planting. No chemical is used after planting and replaced with manual upkeep and maintenance.

REPLANTING PROGRAMME

Species	2025	2026	2027	2028	2029	2030
<i>Eucalyptus pellita</i> & EP Hybrid	1,100	1,200	1,716	2,119	2,603	2,700
<i>Neolamarckia</i>	300	300	300	300	300	300
Total	1,400	1,500	2,016	2,419	2,903	3,000

E.pellita & *Ep Hybrid* is being planted on a large scale as it has a greater tolerance to *Ganoderma* relative to *Acacia mangium*. Low-productive areas will be given top priority for the harvesting and replanting program.

HARVESTING PRODUCTION PROGRAMME

A. SUMMARY OF 2026 HARVESTING PROGRAM - Revised

YEAR OF PLANTING	TOTAL AREA (Sur. ha.)	TOTAL AREA (Pltd. ha.)	TOTAL PROD. VOL (m3)	E.PELLITA / E.HYBRID		A.FALCATERIA	
				AREA (ha.)	PROD. VOL (m3)	AREA (ha.)	PROD. VOL (m3)
2009	24.12	20.65	1,821	20.65	1,821		
2010	5.65	5.65	391	5.65	391		
2013	47.00	41.55	5,182	3.31	189	38.24	4,992
2014	33.36	28.70	2,867	28.70	2,867		
2015	254.16	238.86	23,426	182.66	16,899	56.20	6,528
2016	305.02	279.21	28,603	173.51	15,101	105.70	13,502
2017	283.92	253.98	22,367	253.98	22,367		
2018	138.44	115.50	10,957	115.50	10,957		
2019	323.74	269.73	24,004	269.73	24,004		
2020	328.81	257.21	23,892	257.21	23,892		
2021	108.35	101.25	8,014	101.25	8,014		
GRAND TOTAL	1,852.57	1,612.29	151,523	1,412.15	126,501	200.14	25,022

B. SUMMARY OF 2025 HARVESTING PROGRAM

YEAR OF PLANTING	TOTAL AREA (Sur. ha.)	TOTAL AREA (Pltd. ha.)	TOTAL PROD. VOL (m3)	TOTAL PROD. VOL (MT)	A.FALCATERIA			E.PELLITA / HYBRID		
					AREA (Pltd. ha.)	PROD. VOL Cubic Meter (m3)	PROD. VOL Metric Ton (MT)	AREA (ha.)	PROD. VOL Cubic Meter (m3)	PROD. VOL Metric Ton (MT)
2013	3.42	3.31	380	456				3.31	380	456
2014	12.56	10.85	1,228	1,474				10.85	1,228	1,474
2015	664.22	476.38	44,739	49,901	33.79	6,415	3,911	442.59	38,325	45,990
2016	1,027.35	615.38	68,895	71,663	84.27	18,654	11,375	531.11	50,241	60,289
2017	108.58	94.57	8,836	10,603				94.57	8,836	10,603
2018	136.97	114.05	11,448	13,738				114.05	11,448	13,738
2019	431.99	332.69	32,464	38,957				332.69	32,464	38,957
2020	228.55	165.66	17,106	20,527				165.66	17,106	20,527
GRAND TOTAL	2,613.64	1,812.89	185,096	207,319	118.06	25,069	15,286	1,694.83	160,027	192,033

Year-to-date December 2025, a total volume of 185,096m³ was produced, which 99% achievement. Harvesting is done with a cable yarding system. This minimizes soil compaction and helps to improve the growth of the tree in its early cycle. This system forms one of the key elements that allow tree-growing operations to fulfill their potential by delivering prime sites unaffected by soil compaction.



Cable Yarder System



The branches are trimmed in the field before yarding to the landing area.



In the landing area, the full length is cut into 4-meter length.



Pulplogs and sawlog are trucked separately.



Warning signboards are posted within the harvesting operations are for public awareness.

FIRE EVACUATION DRILLS

Fire evacuation drills shall be conducted at least once a year. All personnel in the building shall participate in the drill. The purpose of the Fire Emergency Plan is:

- a) To ensure the safeguard of human lives in the event of fire.
- b) To establish a systematic and orderly evacuation plan.
- c) To ensure prompt rising of the fire alarm and marshaling of first-aid firefighting efforts.



Fire drill conducted by Tree Plantation staff

10 YEARS' ANNUAL PRODUCTION

10 years (2025-2034): Annual production has been formulated, with an annual harvest area increase of 13% (from 1,813ha in 2025) to reach a target of 3,000ha in 2030, after which the harvest area remains the same in subsequent years. The estimated average yield in 2025 is 102 m³/ha for all species, and this average will continue to increase to reach the target in 2030 of 120 m³/ha. (Refer to figure below).

No.	Year of Harvesting	Harvesting Area (ha)	Est. Yield (m ³ /ha)	Est. Production Target (m ³)	Remarks
1	2025	1,813	102	185,096	
2	2026	2,049	105	215,099	
3	2027	2,315	110	254,637	
4	2028	2,616	115	300,819	
5	2029	2,956	118	348,793	
6	2030	3,000	120	360,000	
7	2031	3,000	120	360,000	
8	2032	3,000	120	360,000	
9	2033	3,000	120	360,000	
10	2034	3,000	120	360,000	

Three levels of inventory being monitored in the plantation are as follows:

- a. Stocking Survey Inventory - to provide information on the stocking rate and growth performance at the initial planting stage, which is at age 1 month, 3 months, and 1 year after planting.
- b. Mid-Rotation Inventory - to provide information on the growth performance at mid-rotation age, i.e., *E. pellita* at age 3 years and *A. falcataria* at age 5 years.
- c. Pre-Harvest Inventory - to provide information on the likely product volume yield shortly before harvesting. i.e.: *E. pellita* at age 5 years and *A. falcataria* at age 7 years

The parameters assessed are usually confined to numbers of stems per hectare (SPH) or % of survival rate, basal area per hectare, Average Height, Average DBH (cm), and possibly some indication of block conditions. The sampling method is based on standard inventory procedures. Every plot should be located at a sampling intensity of 1 plot per hectare, meaning plots should be located on a 100m-by-100m grid. Each plot is **0.04 ha**, making a **4% sample**.

The data will be analyzed and recorded to monitor the tree growth performance. It also will be updated to the TP Block Data Record for future references.

RESEARCH & DEVELOPMENT

Sabah Softwoods Berhad is committed to carry out comprehensive Research and Development in order to improve the quality of produce and yields. Research and Development main objective is to increase and sustain the productivity of the SSB tree plantations by means of delivering good quality planting material and providing technical advisory service on tree plantation management for Best Operational Practices (BOP). In order to focus on the key attribute of productivity, the R&D investigations will be sub-divided into research on the management of germplasms and management of site, stand and risk with the specific objectives;

1. To continuously increase the value of the tree species through breeding program and research collaboration
2. To develop best Operational Practice Through investigation and study on silviculture management
3. To develop TC protocols for mass production of tree species and elite clones

SUSTAINABILITY MANAGEMENT PLAN

Executive Summary

Forest Management Phases

- **2013-2023**
Focused on establishing **multi-purpose forest use**, covering environmental, social, and economic benefits.
- **2024-2033**
Emphasizes **sustainable forest management**, including:
 - Forest protection and conservation
 - Implementation of forest management plans and planting activities
 - Carbon stock and biodiversity assessments
 - Strengthening enforcement against illegal activities
 - **Community engagement**, capacity building, and improving local livelihoods
- **2034-2038**
Focuses on **ecosystem restoration and enhancement**, including:
 - Restoring degraded forests
 - Strengthening enforcement and monitoring capacity
 - Developing ecosystem health indicators
 - Continued carbon and biodiversity conservation efforts

Sabah Softwoods Berhad (SSB) is committed to environmental conservation and sustainability by setting aside approximately 7,000 hectares of forest areas for biodiversity enhancement and climate change mitigation. As part of its continuous efforts, SSB has dedicated 4,669.56 hectares—equivalent to 19% of its FSC®-certified tree plantation area of 23,652.21 hectares—for biodiversity preservation and ecosystem sustainability.

A key priority in SSB's conservation strategy is enrichment planting to enhance wildlife corridors, facilitating human-elephant coexistence. This initiative aims to minimize crop damage caused by elephants while mitigating the risk of human-elephant conflicts in agricultural landscapes. Additionally, designated conservation areas include riparian reserves, protected forests in steep terrains, and vital water catchment areas to safeguard biodiversity and environmental health.

Sabah Softwoods Berhad (SSB) has allocated RM7 million over 10 years (2014-2023) to support conservation efforts. For the next phase of its management plan (2024-2033), dedicated funding of RM1,247,000.00 and RM178,168 has been allocated to ensure the continuity of these initiatives, particularly for the wildlife corridor. In addition to the internal budget provided by Sabah Softwoods Berhad, the Sustainability Department is also actively pursuing external funding to further support projects within the conservation areas and wildlife corridors.

The identified High Conservation Value (HCVs) are carefully managed and continuously enhanced to protect wildlife and ecosystems. These HCVs constitute approximately 15% of the FSC®-certified tree plantation area, reaffirming SSB's commitment to sustainable forestry and environmental stewardship.

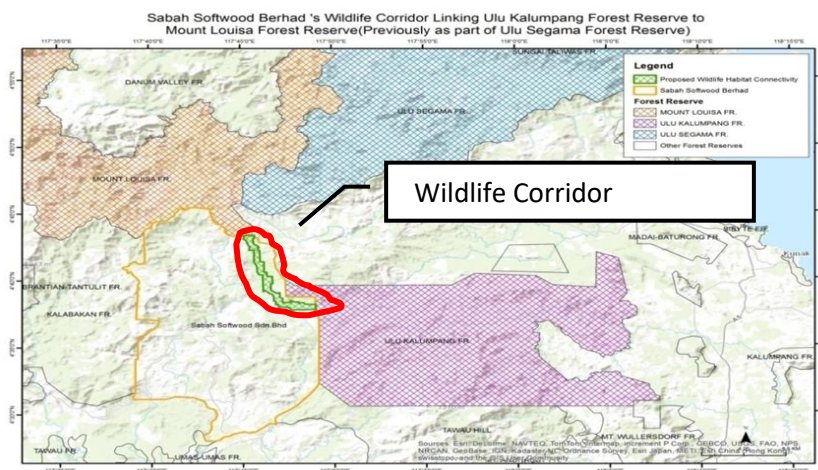
ESTABLISHMENT OF WILDLIFE CORRIDOR

SSB's commitment to long-term solutions for managing human-elephant coexistence is evident in establishing a wildlife corridor in 2014, covering an area of 1,043.70 hectares (previously 1,067 hectares) in the northeastern part of the Brumas region.

The primary objective of the SSB wildlife corridor is to sustain an ecological link between the isolated Ulu-Kalumpang Class 1 Forest Reserve (51,000 hectares) and the main Central Forest Block, the Ulu-Segama Class 1 Forest Reserve (243,000 hectares). This corridor facilitates wildlife movement, particularly for the Bornean pygmy elephant, Bornean orangutan, and other species, promoting population growth while mitigating the risks of inbreeding. Additionally, it keeps wildlife away from plantation activities and assists plant species in colonizing suitable higher-elevation areas.

The designated 1,043.70-hectare wildlife corridor extends 13.89 kilometers in length, with a width ranging from 400 to 800 meters, depending on the elevation. Previously utilized as a tree plantation before 2013, the area has been undergoing restoration to revert to its natural state, particularly for canopy-dependent species such as elephants, orangutans, gibbons, and birds.

Over the past 7 years of restoration, a significant increase in wildlife diversity has been observed, with expectations for continued improvements as the corridor reaches full restoration. Natural regeneration of trees along planting lines is progressing well, enhancing forest richness and contributing to biodiversity. Additionally, restored forests are more effective in carbon sequestration, storing carbon 50% faster than forests left to regenerate naturally. A fully restored forest ecosystem supports natural seed dispersal by animals, ensuring the ecosystem functions effectively while playing a crucial role in combating climate change.



From 2014 up to February 2026, 956 ha with 85,516 trees planted includes are the Dipterocarp species of *Dryobalanops lanceolata* (Kapur paji), *Shorea leprosula* (Seraya tembaga), *Shorea johorensis* (Seraya majau), *Parashorea tomentella* (Urat Mata Beludu), *Lithocarpus* sp (Mempening), etc, Non-Dipterocarps of *Neolamackia cadamba* (Laran), *Pterospermum* sp (Bayor), *Octomeles sumatrana* (Binuang), *Terminalia catappa* (Ketapang), etc, and fruit trees of *Mangifera indica* (Mangga), *Mangifera* sp (Bambangan), *Neohelium lappaceum* (Rambutan), *Artocarpus odoratissimus* (Terap), *Artocarpus altilis* (Sukun), *Durio zibethinus* (Durian), and *Ficus* Sp (Fig Trees).



Compass man, Est. gridline, planting and Circle weeding

Enrichment planting is implemented using suitable native species, with emphasis on healthy and well-hardened seedlings to ensure high survival rates. In riparian reserves, a “seed bank” approach is adopted, where selected trees are planted to naturally regenerate surrounding areas over time. Proper planting techniques, spacing (6m × 6m), and soil nutrient enhancement using fertilizers are applied to support growth.

Upkeep and maintenance activities play an important role in ensuring the survival of the planted trees from weeds and climbing creepers. Maintenance is intensive during the early stages, including regular weeding, creeper cutting, and strip slashing over three years to reduce competition and promote healthy development. Manual methods are preferred to minimize environmental impact, particularly near waterways. Monitoring through periodic census is conducted at 3, 12, and 18 months to assess survival rates, with replanting carried out if mortality exceeds 15%. Overall, the programme has demonstrated effective restoration outcomes, supported by systematic management, careful site practices, and ongoing maintenance efforts.

The realistic ecological indicators for the wildlife corridor are tree canopy cover, presence of wildlife (elephants, orangutan, hornbill, clouded leopard and etc...), number of naturally regenerating native tree species and number of planted trees surviving to three years. Measuring tools to monitor wildlife are direct sighting (direct sight the elephant, transect walking) and indirect sighting (camera traps, satellite collar).

RIPARIAN RESERVE CONSERVATION



Riparian planting commenced in 2014 along the riparian reserves of Sg. Umas-umas of 44.40km (265.20ha), Sg. Merotai of 25.15 km (150.90ha) and Sg. Indit of 15.20 km) which flows through the Brumas region. The function of the riparian reserve is to serve as erosion protection, maintain the water quality, and hydrology. In addition, the riparian maintain the habitats for the freshwater biodiversity and provide a corridor for animals to move between adjacent forest areas. Natural vegetation and trees planted provide shades and foods source for the wildlife.

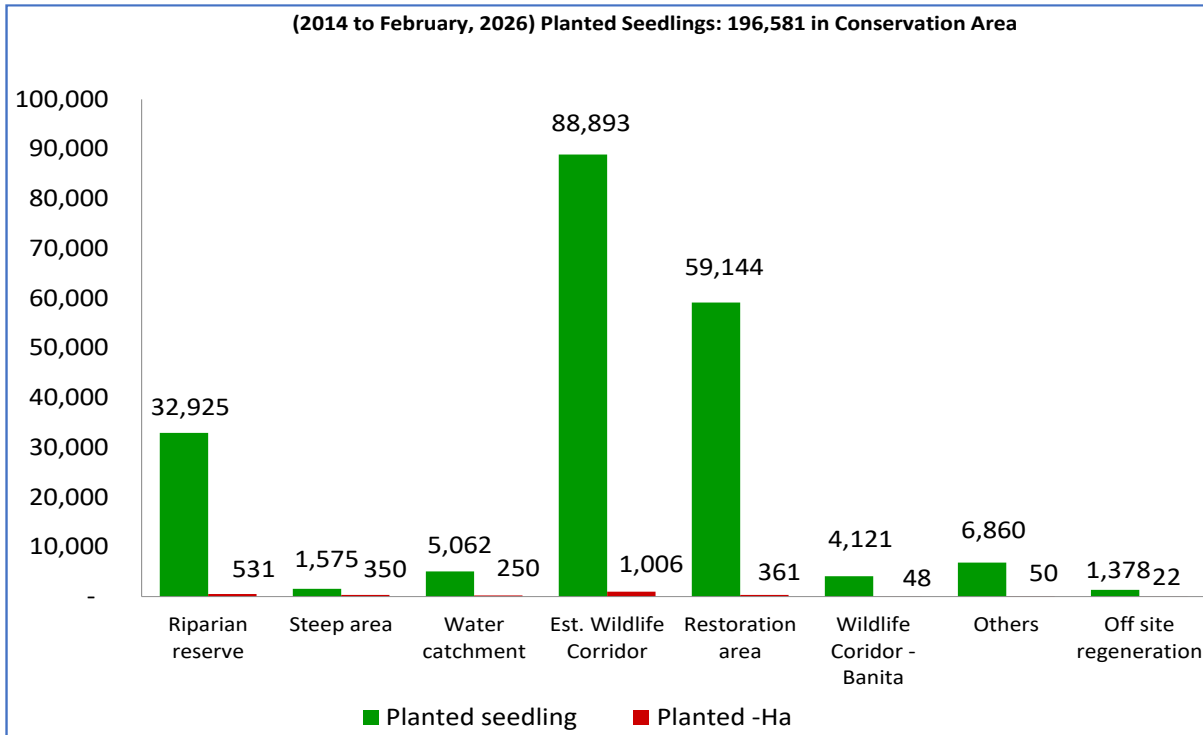
The trees planted were mainly *Octomeles sumatrana* (Binuang), *Shorea mecistopteryx* (Kawang burung), *Pterospermum sp* (Bayor), *Laurace family* (Medang), and *Neolamarckia cadamba* (Laran). Wild bananas in selected areas were also planted as food crops for wildlife.

Rivers	Station	Indicator			Water quality status	Remarks/ Recommendation
		Physical	Chemistry	Biology		
Umas-Umas	upstream	Good	Good	Clean	Clean	Riparian areas need to be monitored and maintained
	Middle	Moderate	Good	Clean	Clean	
	downstream	Moderate	Good	Moderately clean	Slightly contaminated	
Merotai	upstream	Moderate	Good	Very clean	Clean	Riparian areas need to be monitored and maintained
	Middle	Moderate	Good	Clean	Clean	
	downstream	Moderate	Good	Clean	Clean	



STEEP AND WATER CATCHMENT AREA

Protected steep areas and water catchment areas have a natural environment and richest with food crops for wildlife. All these forest areas are having natural regeneration trees. Exposed areas and old trail paths are progressively planted with indigenous species such as *Shorea parscifolia* (*seraya punai*), *Parashorea spp* (*Urat mata*), *Shorea section of shorea* (*Selangan batu*), *Dipterocarp kerri* (*Keruing gondola*), *Pterspermum spp* (*Bayor*), *Lauraceae family* (*Medang*), *Dryobalanops lanceolata* (*Kapur paji*), and fruit trees, namely, *Nephelium spp* (*Rambutan*) and *Durio spp* (*Durian*) for richer biodiversity.



Since 2014 up to February 2026, a total of 196,581 native trees were planted on the Riparian reserves, Steep Area, Water Catchment, Wildlife Corridor, Off-site regeneration, and other conservation initiatives. The planting materials in the form of seeds and wildlings are collected from these forests. Fully matured seeds are collected immediately to avoid predation by pests, especially insects and wild boars. Seed collection activities are routinely planned to exploit mass dipterocarp fruiting events in Sabah. Dipterocarps produce seeds in large quantities at least once every three years. To date, 5,749 seedlings are being nurtured in the Conservation Nursery.

Wildlife Conservation Management



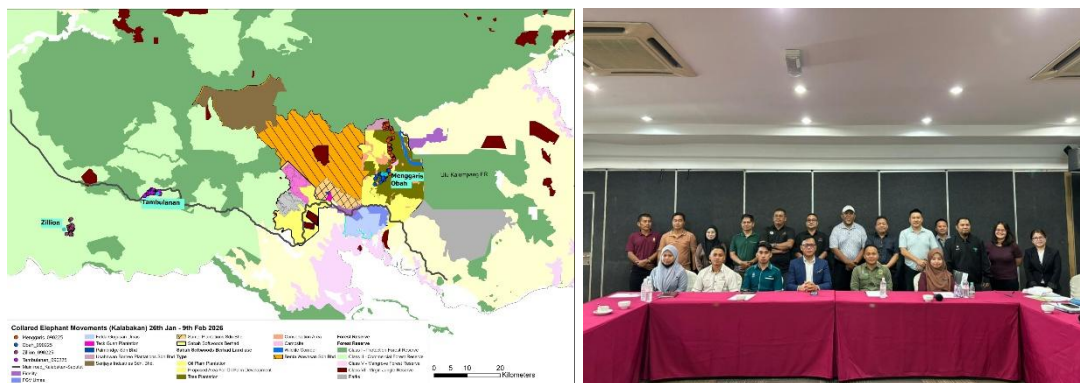
Sabah Softwoods Berhad (SSB) recognises wildlife conservation as a vital component of biodiversity protection within its operational landscape. The Company's land bank supports a diverse range of wildlife species, including numerous bird species and large mammals such as the Bornean elephant (*Elephas maximus borneensis*), orangutans, red leaf monkeys, sun bears, and deer. Located within a lowland mixed Dipterocarp forest landscape, the area historically served as an elephant habitat prior to its conversion into plantation land in 1974.

To monitor biodiversity and wildlife movement, SSB conducts regular monitoring through direct and indirect sightings, camera trapping, satellite tracking, fauna surveys, and night patrols carried out by appointed Honorary Wildlife Wardens. Through its Sustainability Department, SSB manages key conservation areas,

including water catchments, riparian reserves, steep terrain, and designated wildlife corridors to safeguard critical habitats and maintain ecological connectivity.

SSB also actively supports wildlife management initiatives, particularly in the Kalabakan district. Quarterly stakeholder meetings involving plantation companies, smallholders, government agencies, and non-governmental organizations are conducted to discuss and address issues related to crop damage caused by elephants. These collaborative discussions aim to strengthen mitigation strategies, improve coordination, and reduce human-elephant conflict.

In addition, SSB collaborates with WWF-Malaysia, the Malaysia Palm Oil Green Conservation Foundation (MPOGCF), Universiti Putra Malaysia (UPM), and the Sabah Wildlife Department, including supporting satellite tracking of elephant groups in the Kalabakan and Brumas regions to enhance conservation management.



Short-Term Measures

- Trench construction to serve as a secondary barrier alongside electric fencing.
- Night patrolling to monitor elephant movement and reduce potential damage to plantations and surrounding communities.
- Elephant translocation, implemented as a last alternative for aggressive individuals.

Long-Term Measures

- Establishment of wildlife corridors to support natural movement and provide alternative food sources.
- Installation of electric fencing to minimise wildlife encroachment into plantation areas and nearby settlements.
- Satellite tracking and camera trapping to monitor wildlife movement patterns and inform conservation strategies.
- Continuous patrolling to ensure effective monitoring and protection of wildlife habitats.

Biodiversity monitoring

Sabah Softwoods Berhad's area is a lowland area (Lowland mixed Dipterocarp Forest) that has been the home of elephants since before it was converted to a plantation in 1974. The wildlife monitoring was established to determine the long-term population trends and distributional changes, particularly in the conservation areas, including the wildlife corridor.

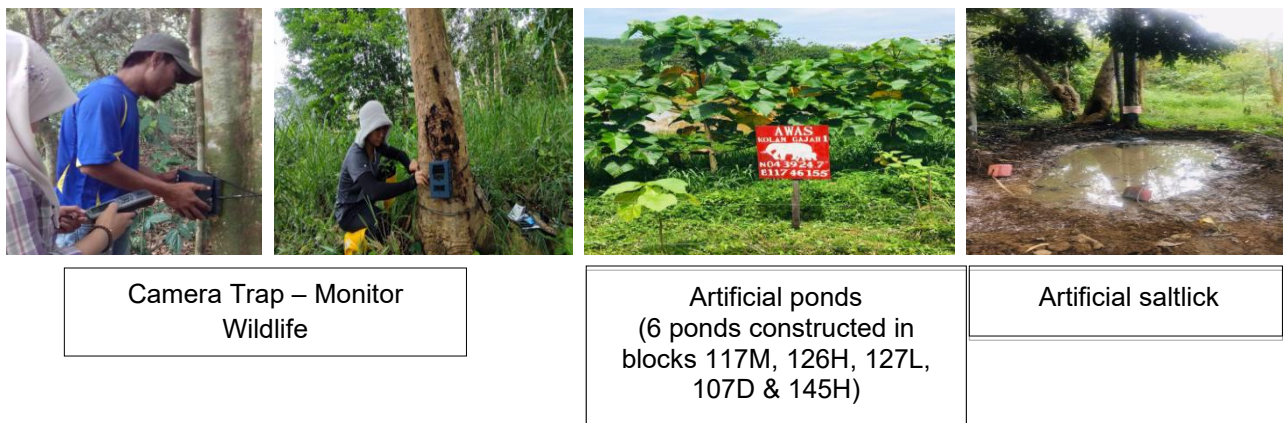
Several of method been used to detect the population and trend, including direct and indirect sightings, satellite-collar, camera trapping, night patrolling, and fauna inventory.

The night patrolling is mainly carried out by the honourable warden of wildlife to ensure the areas are fully protected and safe from any type of illegal activities.

No.	Method	Target species
1.	Direct sighting, Indirect sighting, Camera trapping & Fauna inventory	All wildlife
2.	Satellite-collar & Night patrolling	Elephant

To date, no illegal activities such as trees felling, encroachment, poaching and forest fire were spotted.

The method of installing electric fence is mitigation that intended to prevent the entry of wild elephants into community areas and to prevent the occurrence of crop damage and property caused by elephants. Almost the entire area of housing and plantation has been installed electric fences which need higher cost. In addition, electrical fence maintenance activities were also will be carried out due to the fallen tree affected by the installed electric fence.



Camera Trap – Monitor
Wildlife

Artificial ponds
(6 ponds constructed in
blocks 117M, 126H, 127L,
107D & 145H)

Artificial saltlick

Wildlife opportunistic sighting (Locally threatened)

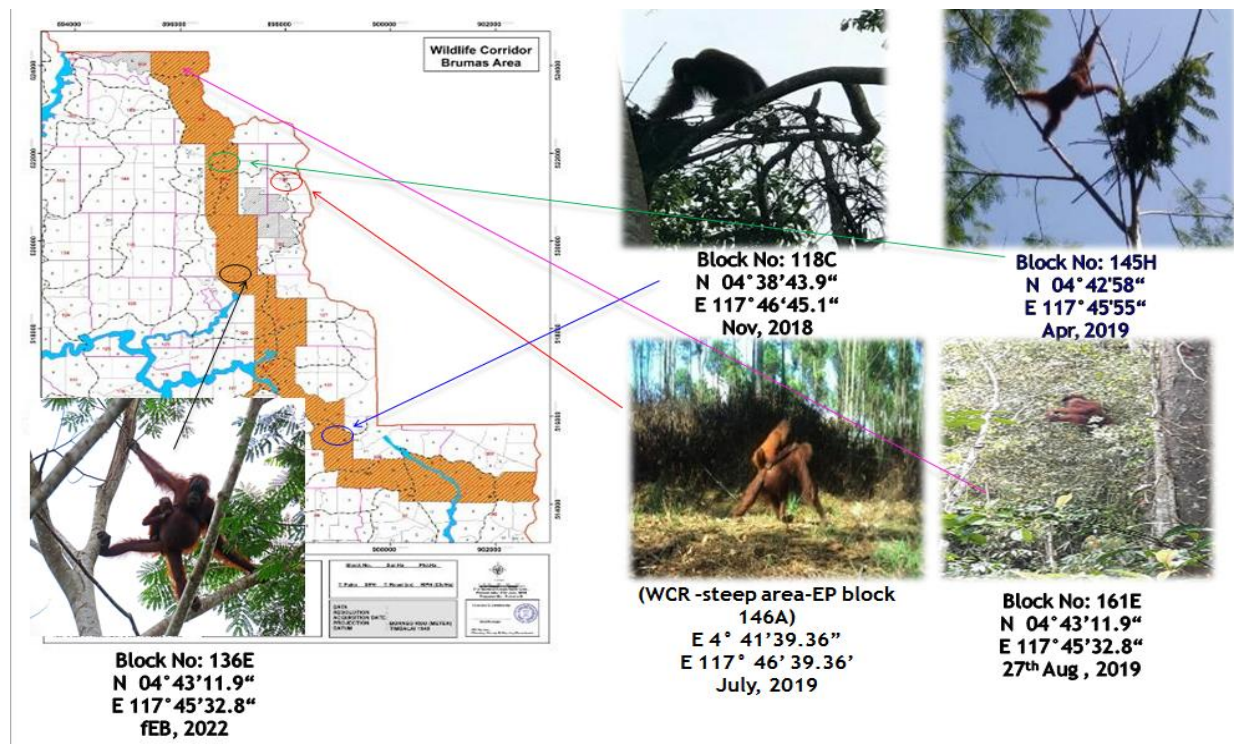
Wildlife sighting is categories by 2 categories which is direct and indirect sighting.



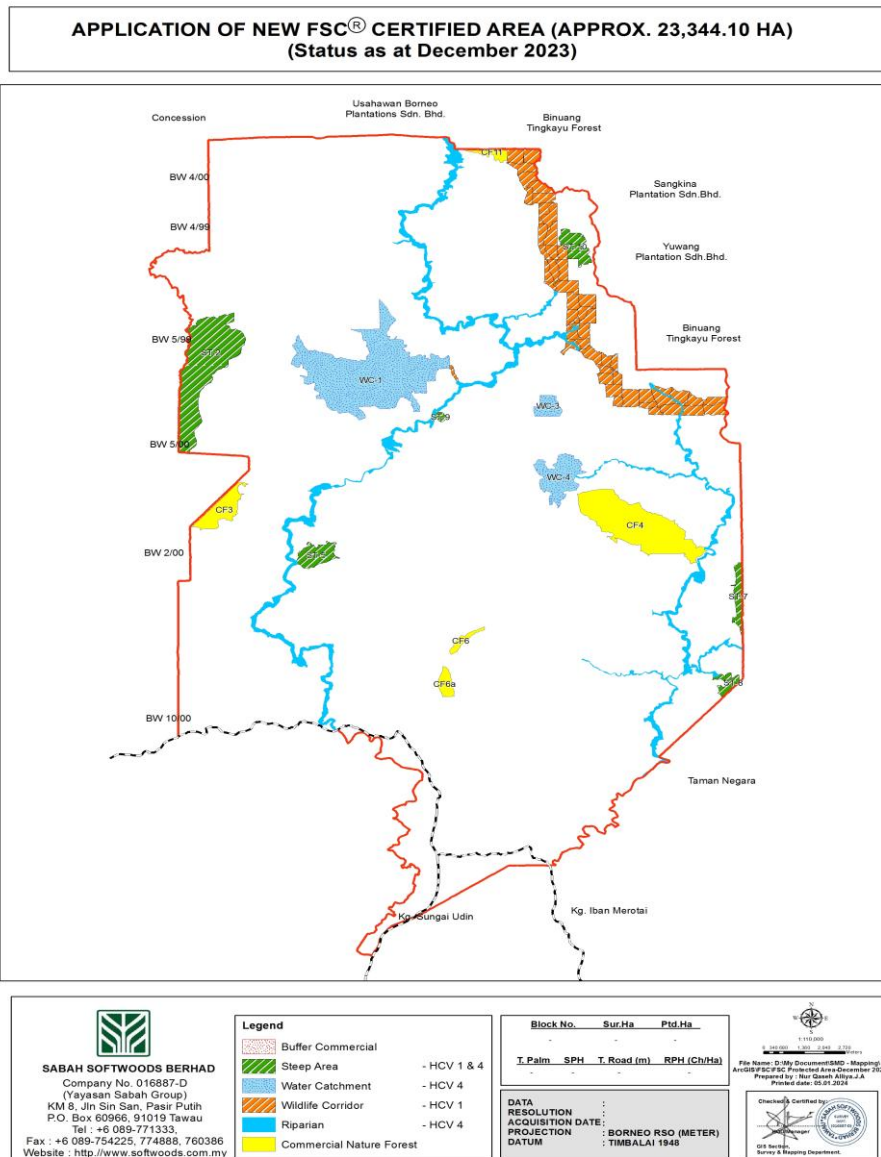
The direct sighting means is the people directly sight the elephant while the indirect sighting is people didn't saw the elephant but only saw the foot print, droppings or the damages by the wildlife.

The Tree Plantation has been given the wildlife sighting recording form to record all the wildlife sighted daily. Warning signboards are posted at strategic places for public aware about the wildlife. Besides that, the awareness programme was been carried out for the communities aware about the rare, threated, and endangered species of wildlife.

Map Showing the orangutans sighted at Wildlife corridor area



Map Showing Conservation Area and Commercial Nature Forest



Flora And Fauna Inventory

The objective of flora and fauna inventory is to assess biodiversity of forest community. This is done by conducting annual monitoring through assessment to assess the effectiveness of the measures employed to maintain or enhance the applicable conservation attributes. Parameters for flora and fauna enumerations are, identify the types and quantify the number of commercial trees, non-commercial trees and fruit trees, identify and implement silviculture treatment to enhance the tree habitat, identify the types and quantify the mammals, birds, amphibians and reptilians and keep record of periodic inventory data for future research study.

The flora and fauna inventory assessment that was conducted to maintain the biodiversity of forest community at Sabah softwoods Berhad.



Figure 2: Workers are measuring the DBH of trees during inventory

Figure 3 : Among the bird species found during the inventory

The Flora and Fauna Inventory Report 2025 present the findings of the comprehensive flora and fauna survey conducted in the Steep Area (ST5), Compartment 58, covering approximately 87.87 hectares of natural forest habitat. Carried out in July 2025, the survey aimed to assess biodiversity, ecological health, and conservation status within this ecologically significant zone.

The flora inventory documented 16 tree species across three categories namely commercial, non-commercial, and fruit trees with a total of 142 trees and an estimated volume of 404.36m³. Key species include both heavy and medium hardwoods, with findings indicating that the area provides vital biodiversity services aligned with High Conservation Value Forest (HCV) categories.

The fauna survey recorded 77 mammals (11 species), 46 birds (16 species), and minimal reptiles and amphibians, including threatened species such as the Bornean Gibbon, Malayan Pygmy Elephant, and Sun Bear. The presence of these species underscores the area's ecological importance as a refuge for protected wildlife. Recommendations focus on continuous monitoring, habitat management, and community involvement to ensure long-term conservation. Essential strategies include regular biodiversity surveys, silvicultural practices like climber removal, habitat restoration, seed collection, and the establishment of biological corridors to maintain ecosystem connectivity. Public awareness, community participation, and periodic management plan reviews are also vital components of a sustainable conservation framework.

As important also, mainly for the wildlife which listed as RED LIST IUCN (threatened species).

- Planting new fruiting plant should be plant to ensure food for inhabitants in the area.

- Other and that, Sustainability unit should establish more signboard to give awareness about protected forest areas.
- The Unit needs to work together with the Enforcement unit to minimize the illegal hunting in the area.
- The Unit can make cooperation with government agencies such as Wildlife Department and Divisional Forest Officer to do joint inspection on the population to increase knowledge from the expert.
- Phrenology study on that area need to be done and a schedule for collecting the seeds from mother trees must be included.

Overall, the survey highlights the rich biodiversity and ecological significance of the Steep Area, emphasizing the need for sustained, coordinated efforts to preserve its natural resources for future generations.

High Conservation Value Management and Monitoring Plan

	General HCV Management Objectives	Specific HCV Management Objectives	Management Target	Management Strategies- Area	Management Strategies- Prescriptions	Operational / Strategic / Threat Monitoring	Verifier: Main verifiers are Annual Plan and Compliance Report
Threatened and endanger species	The sites and resources on which RTE species depend are maintained	Habitats for rare, threatened and endangered (RTE) species are protected from human disturbance	Number of baseline RTE species do not decline	Compt. 110, Compt. 67, Compt. 58, Compt. 55, Compt. 33, Compt. 137,145,146 = 823.66 Hectare	No Hunting and Poaching No illegal timber cutting	Strategic: Annual Flora & Fauna survey Operational/Threat: Regular patrols on roads bordering the protected area Operational: Maintain clear boundary post at HCV site	Survey/inventory reports & analysis Patrolling report Annual compliance report (relevant section indicating boundary post maintenance, patrol summary/analysis)
Wildlife Corridor	<u>HCV 1</u> The significant ecosystems and mosaics with viable populations are	Provides shortest useable corridor between two forest reserves.	1,043.70 Ha (Previously 1,067.00 Ha) of wildlife corridor is maintained or enhance for wildlife	Block 97G,97J,98H, 98I,107C,107D, 108A,108B,108C, 108D,109A,109B, 109C,117G,117M, 118B,118C,118E, 126D,126H,126K,	No encroachment No Hunting and Poaching No illegal timber cutting	GIS analysis showing no deterioration of Wildlife corridor. Analysis indicating the connectivity for large mammals	Compliance report (indicating plan activities, regular patrol and awareness activity) Studies and assessment on the

	maintained or enhanced. The allocated size of wildlife corridor and connectivity are maintained	Maintain connectivity for large mammals	movement. Zero elephants poaching or killings.	126L,127A,127D, 127G,136C,136D, 136E,145C,145D, 145H,145K,154B, 154E,154F,154G, 154H,161D, 161E = 1,033.23 Hectare Compt.104 = 10.47 Hectare		Operational: Enrichment Planting Awareness Tree Planting Program Threat : Regular patrol	effectiveness of Wildlife corridors any.
Water Catchment / Riparian	<u>HCV 4</u> To prevent any further erosion and their subsequent impacts on water bodies. Maintaining healthy riparian reserves	Maintain the provision of basic services of nature	Enrichment/ Restoration planting at 416.10 Ha of riparian reserve. Water quality at identified sampling points are maintained or improved.	Compt. 102,103, 112, 113, 114, 123, 84, 95, 106 = 1,261.96 Hectare RP1 to RP2 - RP3 to RP4 = 416.10 Hectare	No clearing of riparian reserve No Poaching No infrastructure Conduct enrichment planting with indigenous tress and fruit species in area with poor stocking	Strategic: Annual Flora & Fauna survey Water quality monitoring at identified samplings points Operational: Erect warning signboard for public awareness. Operational / Threat Regular Patrol	Patrolling report Annual compliance report (relevant section indicating boundary post maintenance, patrol summary/ analysis) Water quality monitoring report

	General HCV Management Objectives	Specific HCV Management Objectives	Management Target	Management Strategies- Area	Management Strategies- Prescriptions	Operational / Strategic / Threat Monitoring	Verifier: Main verifiers are Annual Plan and Compliance Report
Steep Area	HCV 4 Management activities do not increase the vulnerability to severe weather conditions	Avoid landslide and soil erosion	Maintain stability of steep slope	Compt. 110, Compt. 67, Compt. 58, Compt. 55, Compt. 33, Compt. 137,145,146 = 823.66 Hectare	No structural changes such as road construction infrastructure , etc. No clearing of natural vegetation	Regular patrol Place clear boundary post at HCV site	Survey/inventory reports & analysis Patrolling report Annual compliance report (relevant section indicating boundary post maintenance, patrol summary/analysis)

CHECKLIST HCV MONITORING PROGRAMME 2025

Indicator	HCV Management	Month (Timelines)												Monitoring Plan	PIC	Status	Regular reviews				
		Jan	Feb	Mac	Apr	May	Jun	Jul	Aug	Sept	Oct	Nov	Dec								
HCV 1	Wildlife Corridor																				
	Patrolling, No hunting																	Patrolling report /Awareness Program	Conductor	Wildlife Sighting Regular Patrols	Sustainability Dept.
	Boundary Post																	indicating boundary post maintenance)	Conductor, GIS, APED	Regular Patrols	Sustainability Dept.
HCV 4	Water Catchment/ Riparian/ Steep Area																				
	Inventory report																	Annual Flora & Fauna survey	Sustainability Dept.	Flora & Fauna Inventory	Sustainability Dept.
	Water Quality (Riparian)																	-Identify sampling points -Riparian replanting program	Conductor	Report from DID/ECR Maintenance Prog.	Sustainability Dept. / Est
	Patrolling																	Patrolling report	Conductor	Wildlife Sighting	Estate
	Boundary post																	Rebrushing (indicating boundary post maintenance)	Conductor, GIS, APED	Regular Patrols	Estate
	Signboard No Hunting/ Poaching																	-Erect and maintain warning signboard -Repaired and maintenance	Conductor, APED	Regular Patrols	Estate



Program



Implemented

SOCIAL IMPACT ASSESSMENT

Social Impact assessment was conducted with internal stakeholders include staff, and workers and external stakeholders include contractors, shop owners, Village Head, and neighboring plantations. A total of 88 correspondents were answering the survey form. No major issues were highlighted.

We have not identified any customary or indigenous rights that overlap with our plantation in Brumas region. All of our operations are fully owned by us and we had no claims to prior land use or tenure made by indigenous people.

Complaints and Grievances Procedure has been developed and the channel of communication was well explained to employees, contractors and communities staying in the camp and surrounding community. The procedure has been developed and if complaints have will be documented and action by the Head of Unit is taken accordingly. Records will be kept at least for 5 years.

Workflow	Work Activity/ Process	Responsibility	Timeline	Record
<p><u>Complaints and Grievance</u></p> <pre> graph TD BEGIN([BEGIN]) --> A[a) Worker raise grievance] A --> B[b) Immediate Superior] B --> C[c) Departmental Head] C --> D[d) Written appeal to CEO] D --> E[e) Decision Final] E --> END([END]) </pre>	<p>a) Employee raise Grievance</p> <p>b) Immediate Superior shall find solution.</p> <p>c) If resolution not achieved, grievance be brought-up to the employee's departmental head. Decision shall be within 14 days.</p> <p>d) If the employee feels dissatisfied with the decision he may appeal to CEO.</p> <p>e) Decision by the CEO is final.</p>	<p>Employee</p> <p>Superior</p> <p>HOD</p> <p>CEO</p> <p>CEO</p>		<p>Complaints and Grievance Form (SSB/OF/HR D/16)</p>

The company has a mechanism to resolve land disputes, and cases of loss of legal and customary rights of legitimate persons or individuals eligible for compensation. All individuals that request for the compensation will be entertained. The company will undergo the procedure for the clarification and confirmation of the status of the claimant by the Ketua Kampung and Land and Survey Department and Forestry Department. To date there have been no cases of communities or individuals making claims to land within the Certified Tree plantation area belonging SSB. The Title boundary is well demarcated on the ground and re-brushing is twice a year. The neighboring community is well informed. The Northern, Western and Eastern side of our title land is mainly occupied by oil palm plantations. The Southern part is mainly villagers occupying Kg Jelutong, Kg Iban and Kg Sg.Udin.



Our company has put top priority to build staff and workers quarters. Shops, Police station, Multi-Purpose Hall, Soccer field, Mosque, Church and Dispensary are also made available to provide a conducive environment for the staffs and communities. There are other facilities available like Tennis Court, Padang Golf and Badminton/ Takraw Court. SSB also provided place especially for visitor that come to see the plantation area in Brumas known as Rest House.

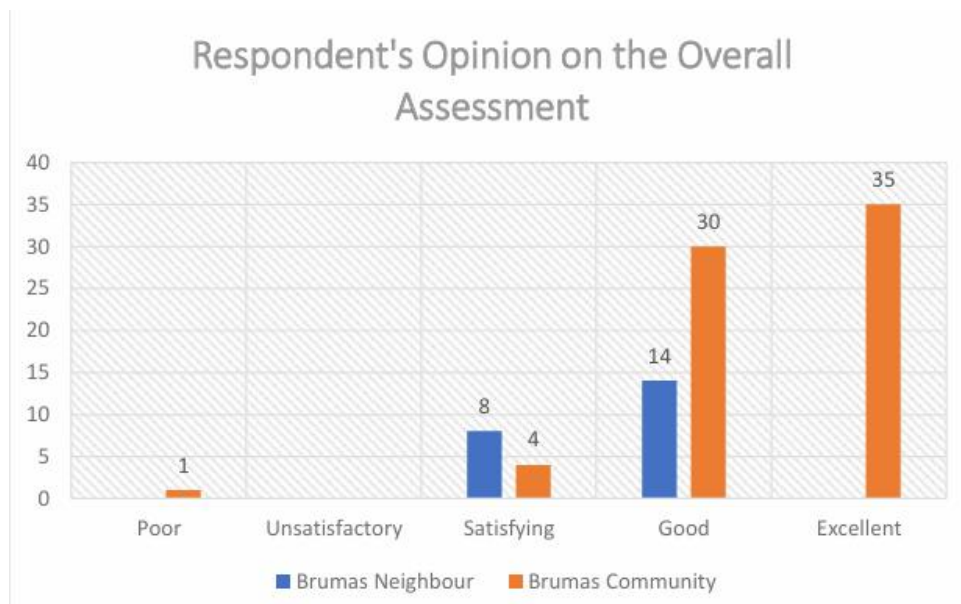


Figure 7: Respondents’ Opinion on the Overall Assessment of SSB Plantation and Factory Operation.

This section presents respondents’ opinions on the overall performance of SSB plantation and factory operations, involving both the Brumas community and its neighbouring communities.

Out of 92 respondents interviewed, the majority expressed **positive perceptions** of SSB operations. A total of **30 respondents from Brumas and 14 from neighbouring communities** rated the operations as “*good*”, while **35 respondents from Brumas** rated them as “*excellent*”. Additionally, **12 respondents** (4 from Brumas and 8 from neighbouring communities) considered the operations “*satisfactory*”. Only **one respondent** rated the operations as “*poor*”, and none rated them as “*weak*”. Despite some concerns—such as wildlife disturbances (e.g., elephants entering residential areas) and road damage caused by heavy vehicles—most respondents

acknowledged that SSB operations have had a **generally positive impact**. Communities also proposed improvements, including better street lighting, water treatment systems, and stable electricity supply. Importantly, respondents indicated that existing issues can be addressed through continued engagement with SSB management, without affecting the positive relationship between the company and local communities.

CONCLUSION

Environment

The findings indicate that most respondents, particularly from the Brumas community, are aware of the **Forest Stewardship Council (FSC)** and its environmental contributions. However, awareness remains limited among neighbouring communities, likely due to insufficient dissemination of information and limited outreach efforts.

Despite this gap, respondents demonstrated strong awareness of SSB's environmental initiatives, particularly in protecting flora and fauna, including endangered species listed under the IUCN Red List. Overall, respondents expressed appreciation for SSB's commitment to environmental conservation for future generations, rather than focusing solely on profit.

Location

Most respondents expressed satisfaction with the **cleanliness of rivers** and the management of water catchment areas. Communities reported minimal concerns regarding environmental pollution (air, land, and water) and have adapted to occasional wildlife interactions. Overall, SSB operations are perceived as having **no significant negative environmental impact** on nearby settlements.

Benefits

The majority of respondents are highly satisfied with the **socio-economic benefits** provided by SSB. These include:

- Employment opportunities
- Support for small business development
- Improved infrastructure such as roads, electricity, and healthcare facilities

These contributions have significantly enhanced the quality of life and economic well-being of local communities.

Recommendations

To further improve operations and community well-being, the following recommendations are proposed:

1. Infrastructure Improvement

Upgrade and maintain key roads, including those in Brumas, Batu 5, Chilp Kong, and teacher housing areas. Consider dedicated lanes for heavy vehicles.

2. Safety and Wildlife Management

Enhance security in plantation and factory areas and implement measures to manage wildlife disturbances (e.g., monkeys, dogs), including fencing for residential areas.

3. Utility Services

Improve water supply reliability, conduct regular water tank maintenance, and strengthen communication during service disruptions.

4. Operational and Environmental Practices

Enforce safety measures for heavy vehicles (e.g., speed limits, proper lighting), restrict operations during adverse weather, and maintain surrounding environments (e.g., drainage, vegetation control).

5. Waste Management

Strengthen solid waste management systems and increase manpower for waste collection.

6. Employment Opportunities

Provide more job opportunities for local residents, particularly unemployed youth.

7. Community Assistance

Collaborate with local communities (e.g., Kg. Iban) to support social needs, including improvements to places of worship and community facilities.

8. Environmental Concerns

Address improper disposal of chemicals (e.g., weed killers into rivers) and enforce stricter environmental compliance.

9. Access to Resources

Consider providing controlled access for local communities to engage in traditional activities such as fishing and foraging.

Brumas Dispensary (clinic) is a support service department mainly under Tree Plantation. For year 2025, several programmers have been outlined as follows:



The main activities of the unit are to provide services health care and medication to workers and defendants in Sabah Softwoods Berhad and also nearby plantations.

WASTE MANAGEMENT

Tree plantation has identified all wastes and sources of pollution in the Environmental Aspects and Impacts Register. Potential sources of waste management pollutions are the scheduled waste, Domestic waste and Clinical waste. Standard Operating Procedure (SOP) of waste management is made available for each operating Units. Scheduled waste store has been built in the Workshop area that meet regulatory requirements, such as security, spill containment, ventilation, safety signage, segregation of wastes by type and an up-to-date inventory. Scheduled wastes are disposed through a licensed contractor by Legenda Bumimas Sdn Bhd and Pentas Flora Sdn Bhd as required by the authority. Clinical wastes are separated and recorded in the Brumas Dispensary and being disposed through the Tawau government Hospital. Licensed contractor Sedafiat Sdn Bhd has been appointed to collect the clinical waste.



Signboards

General wastes are collected from staff, labor line and office premises and disposed by burying in the developed landfill which is away from watercourse

within the plantation. Burning of domestic waste is strictly prohibited and signages are posted to create awareness to the workers.

Land which is conserved helps in carbon sequestration.

What we do in SSB may not have a great impact as a whole but we believe changes comes one step at a time. Like in the words of wisdom of a famous person “you must be the change you wish to see in the world”.

For more information, look us up at the website: www.softwoods.com.my

LAMPIRAN 1

Updated 25.02.2026

NO	ORGANIZATION & ADDRESS	TELEPHONE NO.	FAX NO.	E-MAIL/ WEBSITE	CONTACT PERSON	REMARKS
GOVERNMENT AGENCIES						
1	Pegawai Perhutanan, Daerah Kalabakan, Peti Surat 832, 91008 Tawau Sabah, Malaysia	019-8335783 089-799001 089-799002	089-799000		Datuk Zulkifli Suara En. Mohd Azmi Bin Mophd Yazid @ Pajit Chip Suhezron Pn. Kee Nooridayu binti Mohd Ayub	Chief of Forestry Conservation Brantian Forestry Dept. Kalabakan Mukim Brumas 013-6429236
2	Pejabat Perhutanan Daerah Kunak Kunak Distric Forestry Officer Peti Surat No.02, 91207 Kunak Distric Forestry Officer (Attn. Penolong Pegawai Perhutanan)	089-851863	089-851862	Harry.lkok@sabah.gov.my Noorazah.Mohamad@sabah.gov.my	Harry Bin F. Ikok Noorazah Binti Mohammad 011 31508281	Pegawai Perhutanan Penolong Pegawai Perhutanan
3	Pejabat Hidupan Liar, Daerah Tawau, Tingkat 4, Wisma D.S., Peti Surat 519, 91008 Tawau, Sabah, Malaysia	089-763139	089-764213		Norfarhain binti Jefri 019-5871983 Jon Taran (012-8654981)	Sabah Wildlife Dept., Tawau
4	Ketua Cawangan Pengurusan Badan Air Jabatan Pengairan dan Saliran, Bahagian Pengurusan Sumber Air Kompleks JPS Inanam Lorong Burung Keleto 89350 Inanam, Kota Kinabalu	088-428541	088-428541	wrmSabah@gmail.com	IR DR Tay Tshung Wang Miklin Ationg (016-8485374)	Ketua Cawangan
5	Pegawai Kesihatan Pejabat Kesihatan Kawasan Tawau, Jalan Chong Thien Yun, Sin Onn Peti Surat 990, 91008 Tawau, Sabah	089-757144	089-757535 089-775733	pkk.tawau@sbh.moh.gov.my	Dr.Shammer Khan bin Sulaiman (013-8861797) Tn. Wan Ruzaimi	PPKP
6	Environment Protection Department Lot 1 (GF-4th Floor) & 7 Lot 2 -4 (GF) Wisma IDS, Off Jalan Pintas, 89500 Penampang, Sabah, Malaysia Beg Berkunci 2078 88999 Kota Kinabalu, Sabah	088-251290	088-238120	jpas@sabah.gov.my www.sabah.gov.my/jpas	RAY MARVIN TANN	Pengarah

NO	ORGANIZATION & ADDRESS	TELEPHONE NO.	FAX NO.	E-MAIL/ WEBSITE	CONTACT PERSON	REMARKS
7	Ketua Cawangan Jabatan Alam Sekitar Negeri Sabah Cawangan Tawau TB 4415/6/7, Tingkat 2, Lot 6,7 & 8 Lorong Sabindo Square P.O Box 60630, 91013 Tawau	089-767251 089-767252	089-767250		Tn. Mohd Fauzi bin Mahmud	
8	Jurutera Daerah Tawau, Jabatan Pengairan dan Saliran, P. O. Box 549, 91008 TAWAU	089 - 775 327	(089) 753 586		En. Syahzarul Rizal bin Joddari	
9	Jabatan Tenaga Kerja (Buruh) Pejabat Tenaga Kerja, Tingkat 2, Wisma Persekutuan Tawau, Sabah.	089-773411			Eko Bariono Tumiran	
NGOs						
10	WWF-Malaysia Suite 1-6-W11, ^th Floor CPS Tower, No.1 Jalan Centre Point, 88000 Kota Kinabalu, Sabah, Malaysia	088-248490 088-262420	088-248697	CCheah@wwf.org.my	Cheryl Cheah Phaik Imm (012-5136930)	
INDUSTRY						
11	Benta wawasan Sdn.Bhd., Keruing Estate P.O. Box: Tb 9131 & 9132, Perdana Square Mile 31/2, Jalan apas 91000 Tawau, Sabah, Malaysia	089-911053 089-911054 089-912334 089-912330			Carlos Aronson Charles	Keruing Estate 089-912330
12	Usahawan Borneo Plantation Sdn. Bhd TB 8283, Lot 20c, Perdana Square Commercial, Mile 305 Apas Road, P.O Box 225, 91007 Tawau	089-736210 019-852 2276			Abdul Samad Hj Samadong Eimarkane	HQ Brumas Estate
13	AUMKAR Plantations Sdn Bhd Lot 2A, Taman Sri Idaman, Kedai Perumahan LPPB, 91207 Kunak, Sabah, Malaysia.	089-853 801 089-853 803	089-853 802		Mr. Suresh Petel (MD) Prabakaran Mavoharan 019-883 9954 / 019-813 9954	019-8138050 Aumexpress Est

NO	ORGANIZATION & ADDRESS	TELEPHONE NO.	FAX NO.	E-MAIL/ WEBSITE	CONTACT PERSON	REMARKS
14	Kumpulan Yayasan Sabah Menara Tun Mustapha Kompleks Ibu Pejabat Kumpulan Yayasan Sabah Teluk Likas, Peti surat 11623 88817 Kota Kinabalu, Sabah	089-759805	089-763192	yszpts@gmail.com	Datin Norkhajjah Binti Mohamed Tussin	Pengurus -YS Zon Pantai Timur
15	Yuwang Plantation Sdn Bhd	089-923315		pjuohwilliam@gmail.com	Mr. William Pejoul	014-6676217
SCS						
16	Certification Coordinator Natural Resources Division SCS Global Services 2000 Powell Street Ste. 600, Emeryville, CA 94608 USA			pgill@scsglobalservices.com Epoirson@scsglobalservices.com bgrady@scsglobalservices.com iamaryllis@scsglobalservices.com	Paramjit Gill Evan Poison Brendan Grady Indah Amaryllis Kosasih Mdm Angelica Sumin	012 802 7195
SGS						
17	FSC-COC_Lead Auditor SGS (Malaysia) Sdn. Bhd (10871-T) Unit 10-1 10th Floor Bangunan Malaysia Re No. 17 Lorong Dungun Damansara Heights 50490 Kuala Lumpur, Malaysia	6(03)20959200	6(03)20938202	Abdullah.Din@sgs.com	Mr. Abdullah Din Lead auditor	019-2259051
MSPO						
18	Malaysian Sustainable Palm Oil (MSPO) NIOSH CERTIFICATION SDN. BHD. Lot 22-2, Level 2 Block B, Habour City Phase 1A, Jalan Pantai Baru Sembulan 88000 Kota Kinabalu, Sabah, Malaysia.	6088218168/ 745040		inquiry@nioshcert.com.my jeff@nioshcert.com.my fadhil@nioshcert.com.my	Aqila Farhana Abu Talip Jeff Calvin Jeprol Osinggang Muhammad Fadhil Abu Bakar	019 - 823 6537
LOG BUYERS						
19	Sinora Sdn Bhd KM11, Jalan Sinora, WDT 79, 90009 Sanadakan, Sabah	089-612622	089-612677	sinora@snr.com.my	Mr. Calvin Yin (Executive Director) Mr. Kenny Liew	014-371 1815 019-833 2688
20	Rintis Bakti Sdn Bhd Ground Floor, 18-0 Kingfisher Park, Phase 1 Lorong Plaza Kingfisher 4, Kuala Inanam Kota Kinabalu, Sabah 88450			keekee_liau@hotmail.com	Mr. Chua Chong Hauh (MD) Ms. Liau Shui Kee	017-8681116 019-8148807
21	Marubeni Corporation 4-2, Ohtemachi 1- chome Chiyado-ku Tokyo 100-8088, Japan	81-3-32822342			Mr. Yasuya Isogai Ms. Lorraine Jin	019-8885597 016-8517318

NO	ORGANIZATION & ADDRESS	TELEPHONE NO.	FAX NO.	E-MAIL/ WEBSITE	CONTACT PERSON	REMARKS
22	Integrated Wood Processing Sdn. Bhd Building A10.6600, Sg. Imam, Pasir Putih Locality, Jalan ITC, Sg. Imam, KM 11, Jalan Pasir Putih	016-8260084		chong.vuilun@iwpsb.com.my	Mr. Tu Kui Foh (Director) Admin & Human Resource Manager Mr. Chong Vui Lun	019 - 8139133 019 - 867 9832
23	Daiken Miri Sdn Bhd				Mr. Tony Hwang Huat Bing	019 - 8148807
24	Splendours Greenworld Sdn Bhd			splendoursfgreenworld@gmail.com	Mr. Lim Sing Kiong (GM) Mr. Konh Nyuk Thou (HOMT)	016 - 832 8186 016 - 826 9133
25	Lotus Region Sdn Bhd	089-711772		lotus_region@yahoo.com.my	Mr. Aris bin Salleh Mdm. Kartini binti Hasani	019-8633983 010-4427282 (Project Manager)
26	Kilang Papan Andus (s) Sdn. Bhd				Mr. Frederick Soh Kui Seng	012 - 828 3717
CONTRACTORS						
27	Amalia Enterprise TB 452, Tingkat 1, Lot 7, Block L, Bandar Sabindo, 91000 Tawau, Sabah				Kaharuddin Bin Nawas	019-5877777
28	Syarikat Km Celoh CL 10546786 Brumas Camp 91000 Tawau, Sabah				Norsiana Binti Chabik	011-26885101
29	Herna Enterprise TB 33, Jalan Dunlop, 91000 Tawau, Sabah				Andi Hernawati Binti Sinar Alam	016-8353198
30	Jasriwan Enterprise 23-A, Block A4, Ground Floor, Polytechnic Commercial Center, Phase 1 & 3, Kota Kinabalu, Sabah				MHD Sateri Bin Nurung	016-8116844
31	Double R Motor Lot 11, Ground Floor, Alamesra Plaza, Sulaman Coastal Highway, 88400 Kota Kinabalu, Sabah				Razaliegh Ansing	013-8802115
32	Sarifuddin Bin Sarika Enterprise CL 10524655, Merotai Besar, 91000 Tawau, Sabah				Sarifuddin Bin Sarika	017-9509782
33	Angkasa Lestari Sdn Bhd Block H, TB 4457, Sabindo Square, Jalan Dunlop, 91000 Tawau, Sabah				Hong Ching Meng	019-8831555
34	Kinshope Trading Sdn Bhd TB 2350, 1st Floor, Leeka Light Industrial, Jalan Apas, Peti Surat 2051, 91045 Tawau, Sabah				Anwar Bin Bato	019-8231686
35	Nam Young Contractor TB 2352, 1st Floor, Leeka Light Ind, Mile 2.5 Jalan Apas, 91000 Tawau, Sabah				Anwar Bin Bato	019-8231686
36	Pemborong Kok Hung TB 4494, Ba Zhong Commercial Centre, Jalan Damai, 91000 Tawau, Sabah				Koh Teck Lun	016-6564999

37	Pengangkutan M.B.I 2nd Flr, Jln Chester, 91000 Tawau, D/A Pangkalan Sungai Udin, 91019 Tawau, Sabah				Mohamad Bin Ibrahim	019-7979265
38	Tunas Jaya Enterprise TB 16306, 1st Floor, Perdanajaya Commercial Centre, Jalan Chong Thien Vun, 91000 Tawau, Sabah				Chung Vui Choi	019-8339679
39	Wei Heing Contractor TB 311, Gr Flr Complex, 91025 Tawau, Sabah				Anwar Bin Bato	019-8231686
40	W & Y Contractor Cl. 105390387 Bt6, Jalan Aps, 91013 Tawau, Sabah				Wong Ka Yin	019-5806636
41	Pengangkutan Cepak 1st Floor, Lot No.7, Block 8, Bandar Indah Mile4, 90009 Sandakan, Sabah				Linah Binti Seling	016-6269977
42	Focus Venture Enterprise Lot 5, Kg Nosoob, Jalan Kepayan, 88300, Penampang, Sabah.				Chua Chong Hauh	010-9333768
43	Soon Tiek Sdn Bhd Unit L-1-8, 1st Floor, Block L, Metro Town, Jalan Bunga Ulam Raja, 88300 Kota Kinabalu, Sabah.				Raymond Chin	013-8861800
44	Maju Kita TB 0194, Wisma D5, Jalan Bakau, 91000 Tawau				Bahariansah Baharudin	014-3431171
45	M.S Contractor TB 4125, GR Floor, Jalan Stephen Tan, 91000 Tawau, Sabah				Muhtiar Mustapha	013-5501617
46	Dasuki Enterprise Rumah Kediaman, Kampung Kebun Bunga, 91308, Semporna, Sabah				Zamri Harun	013-6809936
	ORGANIZATION & ADRESS	TELEPHONE NO.	FAX NO.	E-MAIL/ WEBSITE	CONTACT PERSON	REMARKS
	KETUA KAMPUNG/JKK KAMPUNG					
	Kg. Iban	014-37309706/ 019-8431497			Pn. Juliana Nor/En. Romy Musim	Ketua Kampung / MPKK Kg. Iban
	Kg. Baru Sg. Udin (kg. Jelutong)	016-8277595 011-31601700			Arbain Tarinchang/ Samsul Abd Rahman	JPKK KG.SG.UDIN KK Kg. Jelutong
	Ketua Kampung Brumas	014-6341050			Shadan Bin Omar	
	OTHERS					
	HOSPITAL BESAR TAWAU	089-983533				
	BALAI POLIS BOMBALAI	089-768730				
	PONDOK POLIS MEROTAI	013-5400796				
	RELA TAWAU	089-770640				